



Product Datasheet

Triplex Mud Pump

12-P-160HP with HIGH PRESSURE
FLUID END

REFERENCE 12-P-160	REFERENCE DESCRIPTION Triplex Mud Pump
<p>This document contains proprietary and confidential information which belongs to National-Oilwell, L.P.; it is loaned for limited purposes only and remains the property of National-Oilwell, L.P. Reproduction, in whole or in part; or use of this design or distribution of this information to others is not permitted without the express written consent of National-Oilwell, L.P. This document is to be returned to National-Oilwell, L.P. upon request and in any event upon completion of the use for which it was loaned. © National-Oilwell, L.P.</p>	
DOCUMENT NUMBER GSK-7422-P	REV 03



REVISION HISTORY

Rev	Date (dd.mm.yyyy)	Reason for issue	Prepared	Checked	Approved
03	07.11.2011	Corrected disch cross for hi-pressure	RLP	BTS	GDH
02	01.03.2005	Updated to new template	PG	KK	

CHANGE DESCRIPTION

Revision	Change Description
02	Updated to new template; content review and update
03	Discharge cross was from 6" API-5,000 lb to 5" API-10,000 lb. on page 6

TABLE OF CONTENTS

1 PERFORMANCE DATA 4

2 TECHNICAL SPECIFICATION 5

 2.1 General Dimensions 5

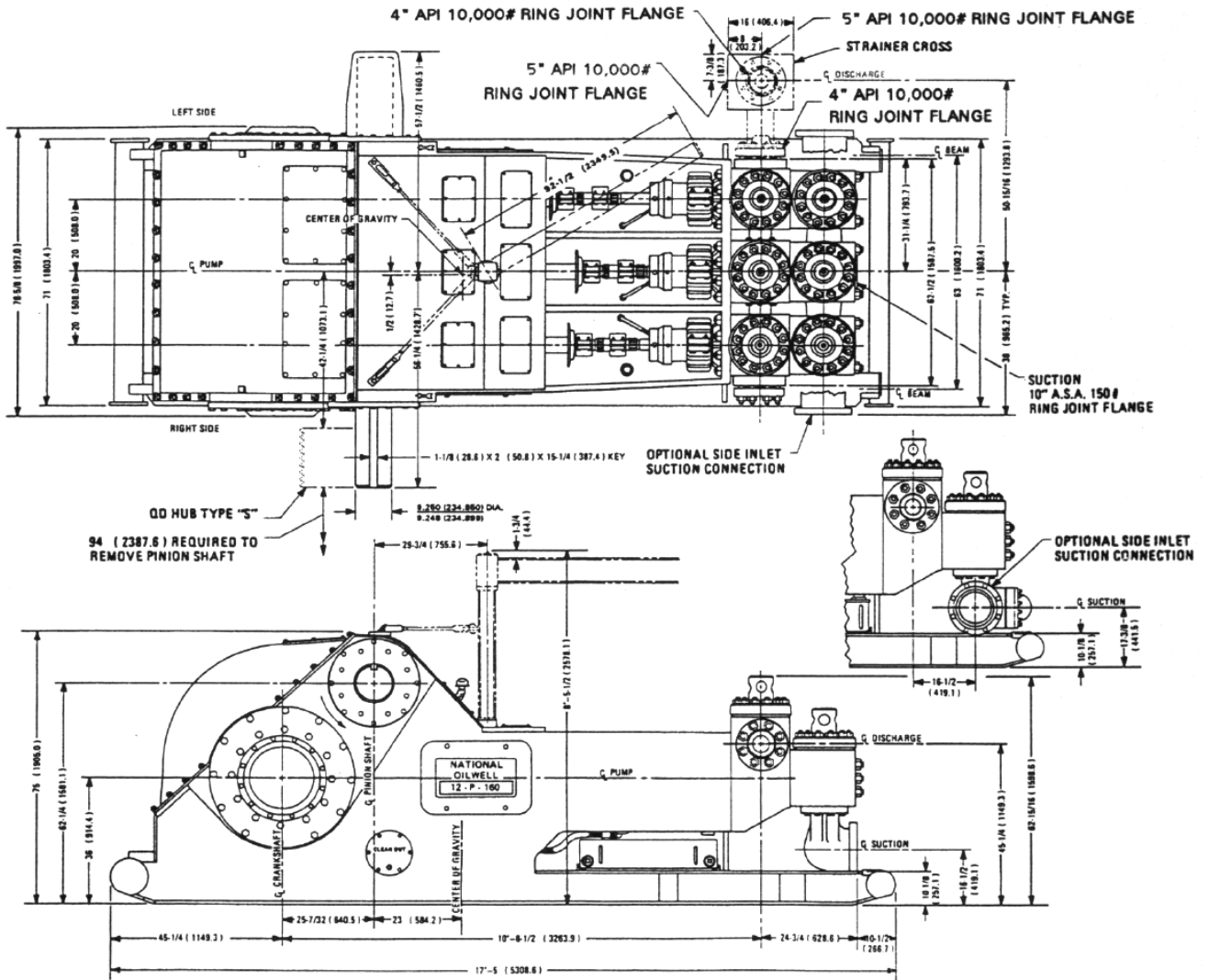
 2.2 Specifications for the 12-P-160HP 6

1 PERFORMANCE DATA

Liner size, inches (mm)			7 ¼"	7"	6 ¾"	6 ½"	6 ¼"	6"	5 ¾"	5 ½"	5"	4 ½"
			(184.2)	(177.8)	(171.5)	(165.1)	(158.8)	(152.4)	(146.1)	(139.7)	(127)	(114.3)
Max. Discharge Pressure, psi (kg/cm ²) with high pressure Fluid End†			3200 (225)	3430 (241.1)	3690 (259.4)	3980 (279.8)	4305 (302.7)	4670 (328.3)	5085 (357.5)	5555 (390.5)	6720 (472.4)	7500 (527.2)
Pump Speed spm	Input HP, HP (kW)	Hyd.** HP, HP (kW)	GPM** (LPM**)	GPM** (LPM**)	GPM** (LPM**)	GPM** (LPM**)	GPM** (LPM**)	GPM** (LPM**)	GPM** (LPM**)	GPM** (LPM**)	GPM** (LPM**)	GPM** (LPM**)
120*	1600* (1193*)	1440 (1074)	***	***	669 (2533)	621 (2349)	574 (2172)	529 (2002)	486 (1840)	444 (1682)	367 (1389)	297 (1124)
100	1333 (994)	1200 (895)	643 (2435)	600 (2270)	558 (2111)	517 (1958)	478 (1810)	441 (1668)	405 (1533)	370 (1401)	306 (1158)	248 (938)
80	1067 (796)	960 (716)	515 (1948)	480 (1816)	446 (1689)	414 (1566)	383 (1448)	353 (1334)	324 (1226)	296 (1121)	245 (927)	198 (750)
60	800 (597)	720 (537)	388 (1461)	360 (1362)	335 (1267)	310 (1175)	287 (1086)	264 (1001)	243 (920)	222 (841)	184 (697)	149 (564)
40	533 (397)	480 (358)	257 (974)	240 (908)	223 (844)	207 (783)	191 (724)	176 (667)	162 (613.1)	148 (561)	122 (462)	99 (375)
Volume/Stroke, gal. (Liters)			6.433 (24.35)	5.997 (22.70)	5.576 (21.11)	5.171 (19.58)	4.781 (18.10)	4.406 (16.68)	4.046 (15.32)	3.702 (14.02)	3.060 (11.58)	2.478 (9.38)
<p>*Rated maximum input horsepower and speed **Based on 90% mechanical efficiency and 100% volumetric efficiency ***Operation over 675 gpm could result in reduced valve life †5,000 PSI Fluid End configuration available</p>												

2 TECHNICAL SPECIFICATION

2.1 General Dimensions



NOTE: Center of Gravity is for complete pump less sprocket

2.2 Specifications for the 12-P-160HP

Dimensions	
Height, floor to center of front inlet suction, inches (mm)	16 ½ (419)
Height, floor to center of discharge, inches (mm)	45 ¼ (1149)
Overall length over skids, inches (mm)	209 (5309)
Width over frame, inches (mm)	78 ⅝ (1997)
Width over pinion shaft, inches (mm)	113 ¾ (2889)
Height, floor to top of gear case, inches (mm)	75 (1905)
Height over fluid cylinders, inches (mm)	62 ⅛ (1599)
Weight-complete, less sheave, lbs. (kg)	54,700 (24,810)
Fluid Connections	
Suction connection	10" ASA-150 lb. R.J. flange
Discharge connection, cross	5" API-10,000 lb. R.J. flange
Capacity Data	
Maximum liner bore, inches (mm)	7 ¼ (184.2)
Stroke, inches (mm)	12 (304.9)
Maximum input horsepower (kW)	1600 (1193)
Rated pump speed, spm	120
Pinion speed, rpm	413
Hydrostatic test pressure of fluid cylinders, psi (kg/cm ²)	11,250 (791)
Mechanical Data	
Fluid cylinder	Steel, 2 piece interchangeable modular design
Valves, API number	MOD. 7
Valve seats	Bottom shouldering, modified for high pressure
Piston rod-piston connection	Piloted and shouldered, National CB-4
Piston rod-intermediate rod connection	Piloted and shouldered, metal-to-metal lock
Type of gears	Relieved herringbone
Gear ratio	3.439:1
Gear and pinion	Through hardened alloy
Type of crosshead pin	Tapered
Number and type of pinion shaft bearing	2 self aligning roller
Number and type of main bearing	2 double row tapered roller
Number and type of crosshead bearing	3 double row needle
Number and type of crankshaft-connecting rod bearing	3 cylindrical roller
Double extension on pinion shaft, inches (mm)	9 ¼ Dia. x 18 ½ Long (234.95 x 469.9)
Sprocket with QD Hub Type S-Dual Electric Motor Drive (Drive sprocket 1200 RPM max.)	Two- 75T 1½" pitch quint.
Ind. or rig drive-drive sprocket 1000 rpm max.	75T 1½" pitch octuple
Ind. or rig drive-drive sprocket 1100 rpm max.	75T 1½" pitch tenwide
Sheave, QD Hub Type S	53" OD 24-8V Section belts